

**PREMISE
CONNECTIVITY
SYSTEMS**

Patch Panels

Keystone Outlet Systems

Patch Cords & Cable

Fiber Optic Systems

SIGNAMAX™
CONNECTIVITY SYSTEMS

For the highest level of cabling system performance, specify the Signamax Category 6+ Connectivity System. This ultra-high performance system has been designed to exceed TIA/EIA Category 6 and ISO/IEC Class E specifications. With usable bandwidth beyond 250 MHz, the Signamax Category 6+ System provides a powerful cost-effective platform to support the most bandwidth-intensive applications.

System elements include patch panels, 110 cross connect products, patch cords, work area outlet systems and cable and are all designed to the highest component level performance specifications. The Signamax Category 6+ System is third party tested to 750 MHz using the worst case 4-connector channel configuration to insure optimum performance.

The Signamax Category 6+ System is backed by our 25-Year Connectivity/Cabling System Limited Warranty when installed by a Certified Installation/Design Partner, providing the assurance that you need in the world of constant changing network technologies.

Category 6+ Connectivity System

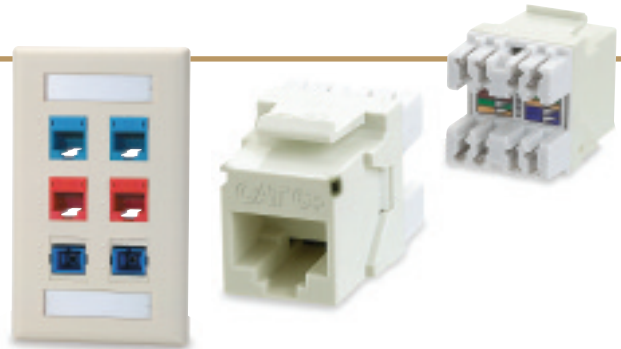
Category 6+ Patch Panels

Signamax Category 6+ Patch Panels are designed for ultra-high performance, high-density and ease of installation. Panels are available in a variety of port sizes for both rack mount and wall mount applications. Panels exceed Category 6 performance specifications as defined in TIA/EIA-568-B.2-1.



Category 6+ Work Area Outlets

Signamax Category 6+ Keystone Jacks have been designed for performance, reliability and ease of installation. Jacks exceed TIA/EIA-568-B.2-1 component level performance specifications. A front-load, front removable modular system is also available to provide additional flexibility in designing work area solutions.



Category 6+ Patch Cords

Signamax continues to set the standard for high-performance, high-quality patch cords. These Category 6+ cables are manufactured to the strictest performance requirements as specified in TIA/EIA-568-B.2-1 using a special, high-performance plug design and cable construction.



Category 6+ 110 Cross Connect System

The Signamax Category 6+ Cross Connect System support ultra-high-performance networks. The system exceeds Category 6 TIA/EIA-568-B.2-1 component level performance requirements. Blocks are available in 48, 96 and 288 pair sizes. Patch cords are available in 110/110 and 110/RJ-45 styles.



Category 6+ Cable

Signamax Category 6+ UTP cable is ETL verified, manufactured to the highest quality standards and exceeds all performance specifications as defined in TIA/EIA-568-B.2-1. Cable is available in UL CMP plenum and non-plenum CMR versions and is supplied in "tangle-free" cartons of 1000'.



The Signamax Category 5e+ Connectivity System provides superior permanent link and channel performance by combining our patch panels, work area products, patch cords, 110 cross-connect systems and cable. All Category 5e+ products are engineered to exceed TIA/EIA-568-B.2 component level specifications to insure support for the most demanding network applications. With usable bandwidth beyond 150 MHz, the Signamax Category 5e+ system combines exceptional value, performance and reliability for today's mission critical networks.

The Signamax Category 5e+ System is third party tested using the worst case 4-connector channel configuration to insure maximum performance. When installed by a Signamax Certified Installation/Design Partner you can chose to have your system covered by our 25-Year Connectivity/Cabling System Limited Warranty offering assurance that your system will meet your current and future network requirements.

Category 5e+ Connectivity System

Category 5e+ Patch Panels

Signamax Category 5e+ Patch Panels are engineered for high-performance, high density and ease of installation. Panels are available in a variety of port sizes for both rack mount and wall mount applications. Panels exceed all performance requirements as defined in TIA/EIA-568-B.2.



Category 5e+ Work Area Outlets

Signamax Keystone Jacks have been designed for performance, reliability and ease of installation. Jacks exceed TIA/EIA-568-B.2 component level performance specifications. A front-load, front removable modular system is also available to provide additional flexibility in designing work area solutions.



Category 5e+ Patch Cords

Category 5e+ Patch Cords ensure optimum channel performance. These cords accommodate both T568A/B applications and are offered in a variety of colors for easy circuit identification. Molded boots have a snag-free feature that protects the modular connector, while the slim-profile boot allows for connection to the highest-density equipment.



Category 5e+ 110 Cross Connect System

Signamax Category 5e+ 110 Cross-Connect system is designed for performance and ease of installation. When used as a transition point or as a primary part of your connectivity system, optimum performance is ensured. Patch Cords are available in 110/110 and 110/RJ-45 styles.



Category 5e+ Cable

Signamax Category 5e+ UTP cable is ETL verified, manufactured to the highest quality standards, and exceeds all performance specifications as defined in TIA/EIA-568-B.2. Cable is available in UL CMP plenum and non-plenum CMR versions and is supplied in "tangle-free" cartons of 1000'.



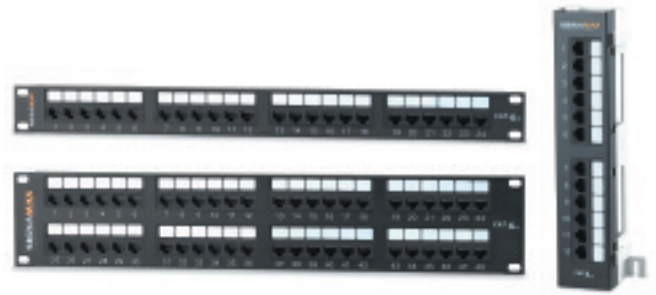
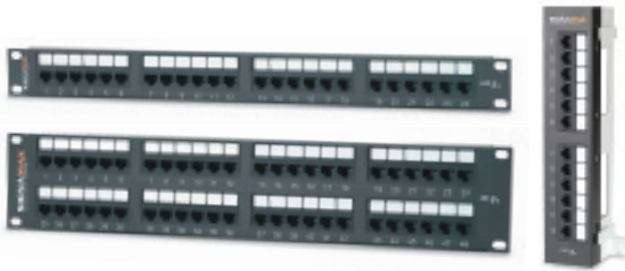
CAT

5

Patch Panels

Signamax Patch Panels are designed to exceed all TIA/EIA-568-B performance specifications. These high-density panels are available in a variety of port sizes for both rack mount and wall mount applications. Panels feature front and rear labeling capabilities for easy circuit identification. Panels support both T568A and T568B wiring configurations using an easy to read color-coded label.

Panels are constructed for maximum strength and durability and feature a fully enclosed 6-port modular design providing flexibility and protection of printed circuitry. Rear termination is made quick and easy using a 110 type connector compatible with standard multi-pair impact tool to reduce installation time or single position 110 or Krone termination tool. Panels include an integrated cable management feature for cable routing and strain relief requirements. An optional cable management bar easily mounted to the back of the panel is available for improved routing and strain relief functions.



Category 6+ Patch Panels

PART NO.	DESCRIPTION
12458MD-C6C	12-Port Cat 6+ Patch Panel, T568A/B Wiring, 1.75" H
24458MD-C6C	24-Port Cat 6+ Patch Panel, T568A/B Wiring, 1.75" H
48458MD-C6C	48-Port Cat 6+ Patch Panel, T568A/B Wiring, 3.50" H
SMB-350	Panel Mount Cable Management Bar, 3.5" Deep
12458M-C6C	12-Port Cat 6+ Mini Wall Mount Panel, T568A/B Wiring
12458MH-C6C	12-Port Cat 6+ Mini Hinged Wall Mount Panel, T568A/B

Category 5e+ Patch Panels

PART NO.	DESCRIPTION
12458MD-C5E	12-Port Cat 5e+ Patch Panel, T568A/B Wiring, 1.75" H
24458MD-C5E	24-Port Cat 5e+ Patch Panel, T568A/B Wiring, 1.75" H
48458MD-C5E	48-Port Cat 5e+ Patch Panel, T568A/B Wiring, 3.50" H
SMB-350	Panel Mount Cable Management Bar, 3.5" Deep
12458M-C5E	12-Port Cat 5e+ Mini Wall Mount Panel, T568A/B Wiring
12458MH-C5E	12-Port Cat 5e+ Mini Hinged Wall Mount Panel, T568A/B

Keystone Jacks

Signamax Keystone Jacks exceed all performance requirements as defined in TIA/EIA-568-B and provide a sound platform for supporting all today's network systems including Gigabit Ethernet. Jacks can be terminated with industry standard 110 or Krone termination tools and feature color-coding for both T568A and T568B wiring.

Jacks feature the ability to mount either color-coded icon tabs for service identification or dust covers to protect unused jacks from dust and other contaminants. Jacks are available in nine colors and are supplied with 2 color-matched icon tabs and dust covers for voice or data identification.

PART NO.	DESCRIPTION
KJ458-C6C	Category 6+ Keystone Jack, T568A/B Wiring, Light Ivory

Standard color is Light Ivory For other colors add the following to P/N;

-BK -BU -GN -GY -OR -RD -WH -YE



Category 5e+ Keystone Jacks

PART NO.	DESCRIPTION
KJ458-C5E	Category 5+ Keystone Jack, T568A/B Wiring, Light Ivory

Standard color is Light Ivory For other colors add the following to P/N;

-BK -BU -GN -GY -OR -RD -WH -YE



Category 3 Voice Grade Keystone Jacks

PART NO.	DESCRIPTION
KJJ126-C3U	Category 3 RJ-12 6 Wire Keystone Jack, USOC Wiring

Standard color is Light Ivory For White add -WH to P/N.



Faceplate and Surface Mount Multimedia Boxes

Signamax offers one of the broadest selections of field configurable, flush mount faceplates and multimedia surface mount boxes. From single gang faceplates to multimedia surface mount multi-port boxes; Signamax has the solutions to fit your needs.

Single Gang Faceplate without Labeling Windows

PART NO.	DESCRIPTION
SKF-1	1-Port Single Gang Faceplate w/o Labeling
SKF-2	2-Port Single Gang Faceplate w/o Labeling
SKF-3	3-Port Single Gang Faceplate w/o Labeling
SKF-4	4-Port Single Gang Faceplate w/o Labeling
SKF-6	6-Port Single Gang Faceplate w/o Labeling

Standard color is Light Ivory

For other colors add the following to P/N.

BK ■ -GY ■ -WH



Single Gang Faceplate with Labeling Windows

PART NO.	DESCRIPTION
SKFL-1	1-Port Single Gang Faceplate w/Labeling
SKFL-2	2-Port Single Gang Faceplate w/Labeling
SKFL-3	3-Port Single Gang Faceplate w/Labeling
SKFL-4	4-Port Single Gang Faceplate w/Labeling
SKFL-6	6-Port Single Gang Faceplate w/Labeling
SKFLA-2	2-Port Single Gang Angled Faceplate w/Labeling
SKFLA-4	4-Port Single Gang Angled Faceplate w/Labeling

Standard color is Light Ivory

For other colors add the following to P/N.

BK ■ -GY ■ -WH



Double Gang Faceplate

PART NO.	DESCRIPTION
DKF-6	6-Port Double Gang Faceplate w/o Labeling
DKF-12	12-Port Double Gang Faceplate w/o Labeling
DKFL-6	6-Port Double Gang Faceplate w/Labeling
DKFL-12	12-Port Double Gang Faceplate w/Labeling
DKFLA-8	8-Port Double Gang Angled Keystone Faceplate

Standard color is Light Ivory

For other colors add the following to P/N.

BK ■ -GY ■ -WH



Surface Mount Faceplate Boxes

PART NO.	DESCRIPTION
SMB1-SG	Single Gang Surface Mount Faceplate Box
SMB1-DG	Double Gang Surface Mount Faceplate Box

Standard color is Light Ivory

For other colors add the following to P/N.

BK ■ -GY ■ -WH



1-, 2-, and 4-Port Surface Mount Multimedia Boxes

PART NO.	DESCRIPTION
SMK-1	1- Port Surface Mount Multimedia Box
SMK-2	2- Port Surface Mount Multimedia Box
SMK-4	4- Port Surface Mount Multimedia Box

Standard color is Light Ivory

For other colors add the following to P/N.

BK ■ -GY ■ -WH

Note; Black & Gray color will be available in September



Keystone Multimedia Modules

Signamax offers a wide range of keystone connector modules designed to create a customized multimedia solution in any single or double gang faceplate or surface mount box. Applications include high end audio/video systems, satellite systems, CTV, CCTV, DVD, and VCR, for home, classroom and office environments. Fiber optic systems are supported with ST, SC and small form-factor connectors such as LC and MT-RJ.



Keystone Blank Modules

PART NO.	DESCRIPTION
CMK-BL	Blank Keystone Module

Standard color is Light Ivory
 For other colors add the following to P/N.
 BK ■ -GY ■ -WH



F-Type and BNC Connector Modules

PART NO.	DESCRIPTION
CMK-F	F-Type Keystone Connector Module
CMK-BNC	BNC Keystone Connector Module

Standard color is Light Ivory
 For other colors add the following to P/N.
 BK ■ -GY ■ -WH



RCA-110 Connector Modules

PART NO.	DESCRIPTION
CMK-110RCAW	RCA White Stripe to 110 Connector Module
CMK-110RCAR	RCA Red Stripe to 110 Connector Module
CMK-110RCAY	RCA Yellow Stripe to 110 Connector Module

Standard color is Light Ivory
 For other colors add the following to P/N.
 BK ■ -GY ■ -WH



RCA Feed-Thru Connector Modules

PART NO.	DESCRIPTION
CMK-RCAW	RCA White Stripe Feed-Thru Connector Module
CMK-RCAR	RCA Red Stripe Feed-Thru Connector Module
CMK-RCAY	RCA Yellow Stripe Feed-Thru Connector Module

Standard color is Light Ivory
 For other colors add the following to P/N.
 BK ■ -GY ■ -WH



SVHS-110 Connector Modules

PART NO.	DESCRIPTION
CMK-110SVHS	SVHS to 110 Connector Module

Standard color is Light Ivory
 For other colors add the following to P/N.
 BK ■ -GY ■ -WH



3-Way Binding Post Connector Modules

PART NO.	DESCRIPTION
CMK-RA	Red 3-Way Binding Post Connector Module
CMK-BA	Black 3-Way Binding Post Connector Module

Standard color is Light Ivory
 For other colors add the following to P/N.
 BK ■ -GY ■ -WH



Fiber Optic Connector Modules

PART NO.	DESCRIPTION
CMK-ST	ST MM/SM Fiber Connector Module
CMK-SC	SC MM/SM Fiber Connector Module
CMK-MTRJ	MT-RJ MM/SM Fiber Connector Module
CMK-LC	LC MM/SM Fiber Connector Module

Standard color is Light Ivory
 For other colors add the following to P/N.
 BK ■ -GY ■ -WH

Patch Cords

Signamax patch cords ensure optimum channel performance. These cords accommodate both T568A and T568B wiring applications and are offered in ten colors for easy circuit identification. Insert-molded boots have a snag-free feature that protects the modular connector while the slim-profile boot allows for connection to the highest-density equipment. The molded boot provides superior mechanical strain-relief properties. All patch cords are manufactured using ETL verified stranded cable with 50 micro-inches of gold plating on the plug contacts.

Category 6 Patch Cords w/Molded Snag-Proof Boots

PART NO.	DESCRIPTION
C6-115CC-LFB	Category 6 Patch Cord w/Snag-Proof Boots

For cable length substitute **L** for color in P/N.

3=3' 5=5' 7=7' 10=10' 14=14' 20=20' 25=25' 50=50'

For cable color substitute **CC** for color in P/N.

BK ■ **BU** ■ **GN** ■ **GY** ■ **OR** ■ **RD** ■ **WH** □ **YE** ■

Custom lengths are available.



Category 5e Patch Cords w/Molded Snag-Proof Boots

PART NO.	DESCRIPTION
C5E-114CC-LFB	Category 5e Patch Cord w/Snag-Proof Boots

For cable length substitute **L** for color in P/N.

1=1' 3=3' 5=5' 7=7' 10=10' 14=14' 25=25' 50=50' 100=100'

For cable color substitute **CC** for color in P/N.

BK ■ **BU** ■ **GN** ■ **GY** ■ **OR** ■ **PU** ■ **RD** ■ **WH** □ **YE** ■

For patch cords without molded snag-proof boots substitute **121** for **114** in P/N.
Custom lengths are available.



Category 6+ & Category 5e+ Cable

Signamax UTP cable is ETL verified, manufactured to the highest quality standards, and exceeds all performance specifications as defined in TIA/EIA-568-B and ISC/IEC. Cable is available in UL CMP plenum and non-plenum CMR versions and is supplied in "tangle-free" cartons of 1000'.



Category 6+ 4-Pair Solid ETL Verified Cable

PART NO.	DESCRIPTION
BC6-4PCC	Category 6+ 4-Pair ETL Verified Plenum UL CMP Cable, 1,000 ft.
BC6-4CC	Category 6+ 4-Pair ETL Verified Non-Plenum UL CMR Cable, 1,000 ft.

For cable color substitute **CC** for color in P/N. Other colors available as a special request

BU ■ **GY** ■ **WH** □ **YE** ■

Category 5e+ 4-Pair Solid ETL Verified Cable

PART NO.	DESCRIPTION
BC5E-4PCC	Category 5e+ 4-Pair ETL Verified Plenum UL CMP Cable, 1,000 ft.
BC5E-4CC	Category 5e+ 4-Pair ETL Verified Non-Plenum UL CMR Cable, 1,000 ft.

For cable color substitute **CC** for color in P/N. Other colors available as a special request

BU ■ **GY** ■ **WH** □ **YE** ■

Category 3 Voice Grade 4-Pair Solid Cable

PART NO.	DESCRIPTION
BC3-4PWH	Category 3 4-Pair Plenum UL CMP Cable, 1,000 ft., White
BC3-4GY	Category 3 4-Pair Non-Plenum UL CMR Cable, 500 ft., Gray

Slide-Out Rack Mount Fiber Optic Enclosure

Signamax slide-out rack-mount panel provides a simple high-density low profile solution for easy access and management of fiber optic terminations in a one-rack space design. The sliding-tray is equipped with slack-fiber storage spools and comes complete with a number of cable management devices for organizing cables entering and exiting the panel. An optional splice tray is available. Wall Mount Enclosures are available in 2-module and 4-module versions and can accommodate up to 48 fibers. Enclosures include integrated cable management features.

2-Module Slide-Out Rack Mount Fiber Optic Enclosure

PART NO.	DESCRIPTION
SL2M-B	2-Module (12 to 24 Fibers) Slide-Out Rack Mount Fiber Optic Enclosure. Dimensions: 1.75"H x 19.0"W x 14.0"D



2 & 4-Module Wall Mount Fiber Optic Enclosure

PART NO.	DESCRIPTION
WFE2-B	2-Module (12 to 24 Fibers) Wall Mount Fiber Optic Enclosure Dimensions: 9"H x 10"W x 3.50"D
WFE4-B	4-Module (24 to 48 Fibers) Wall Mount Fiber Optic Enclosure Dimensions: 15"H x 12"W x 3.50"D



ST Connector Modules for Fiber Enclosures

PART NO.	DESCRIPTION
UFE-B-06ST	6-Port (6 Fiber) ST MM/SM Module
UFE-B-08ST	8-Port (8 Fiber) ST MM/SM Module
UFE-B-12ST	12-Port (12 Fiber) ST MM/SM Module

Multimode/Singlemode connectors use phosphor bronze sleeve.
For Singlemode connectors add -C. Singlemode connectors use ceramic sleeve.



SC Connector Modules for Fiber Enclosures

PART NO.	DESCRIPTION
UFE-B-06SC	6-Port (6 Fiber) SC MM/SM Module,
UFE-B-08SC	8-Port (8 Fiber) SC MM/SM Module
UFE-B-12SC	12-Port (12 Fiber) SC MM/SM Module

Multimode/Singlemode connectors use phosphor bronze sleeve.
For Singlemode connectors add -C. Singlemode connectors use ceramic sleeve.

Note: 4- 6- and 12-Module Rack Mount Enclosures are available supporting up to 144 fibers.

LC Connector Modules for Fiber Enclosures

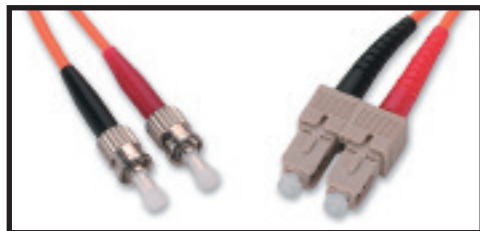
PART NO.	DESCRIPTION
UFE-B-06LC	6-Port (12 Fiber) LC SM/MM Module
UFE-B-08LC	8-Port (16 Fiber) LC SM/MM Module

Multimode/Singlemode connectors use phosphor bronze sleeve.
For Singlemode connectors add -C. Singlemode connectors use ceramic sleeve.

Fiber Optic Patch Cords

Fiber optic patch cords are suited for equipment jumper cables, cross connects and work area connections. All patch cords are manufactured using OFNR riser grade cable and are 100% factory tested to ensure performance to TIA/EIA-568-B-3 standards.

Patch Cords are available in both multimode (62.5/125µm) and singlemode (9/125µm) cable-types in duplex and simplex versions.



PART NO.	DESCRIPTION
FC-2/2-LM	ST to ST Duplex Multimode Patch Cord, 62.5/125
FC-4/4-LM	SC to SC Duplex Multimode Patch Cord, 62.5/125
FC-4/2-LM	SC to ST Duplex Multimode Patch Cord, 62.5/125
FC-9/9-LM	LC to LC Duplex Multimode Patch Cord, 62.5/125
FC-9/2-LM	LC to ST Duplex Multimode Patch Cord, 62.5/125
FC-9/4-LM	LC to SC Duplex Multimode Patch Cord, 62.5/125
FC-8/8-LM	MT-RJ to MT-RJ Duplex Multimode Patch Cord, 62.5/125
FC-8/2-LM	MT-RJ to ST Duplex Multimode Patch Cord, 62.5/125
FC-8/4-LM	MT-RJ to SC Duplex Multimode Patch Cord, 62.5/125

For length substitute **L** in P/N. Other lengths are available.

1=1 meter 2=2 meters 3=3 meters 5=5 meters

For Singlemode 9/125 cords substitute **FCS** for **FC** in P/N

For Multimode 50/125 cords substitute **FC50** for **FC** in P/N